



Smart innovative trailer tracking

Small tracking device to be mounted in the rear light of a trailer.

Contains GPS, GSM, RF and much more...



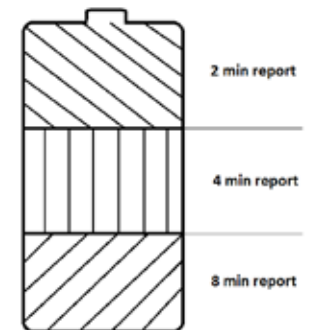
Benefits:

- Frequent positions
- No battery – infinite capacity
Supercaps are used to store energy
- Does not influence or interfere with the vehicle / trailers electrical circuits.
- Securing of equipment / trailer.
- 5 year guarantee

Report interval by movement:

- If constant power from running lights:
 - position every 2 min.
- If voltage from the brake or indicator:
 - position every 2 to 8 min.

Note: 4-6 positions per. time brakes or indicators are used.



Report if no voltage:

- 1 position every 12 hours,
- or position by movement.

Note: After 2 days without movement and without voltage, the unit will be discharged.



Dimension: 54 x 44 x 19mm

Patent: PA 2015 00671

Specifications

- GPS
- GSM – Multioperator net-work triangulation, with TA values
- Web-interface
- Water repellent

Wired to:

1. Grounding
2. Brake light
3. Indicator
4. Running-lights

Serversolution:

www.trailer-eye.com + own API

Icons by influence:



Braking Light



Driving Light



Indicator



Movement

Mounting instructions:

The housing of Trailer-Eye is water proof IP65.

The wires are exposed and the installer must close these off, to prevent any kind of moisture inside the unit.



How is the power stored?

The unit will be recharged when using:

- Running lights
- Brake
- Indicator.



The energy is saved in supercaps, which makes it possible to use the energy over a longer period.

Memory:

If a Trailer-Eye cannot get a GSM-fix, it will store up to 5 positions in the memory. These will be shown on the server in the colour orange.

Trailer Eye can be connected from 10V and up to 36 V.

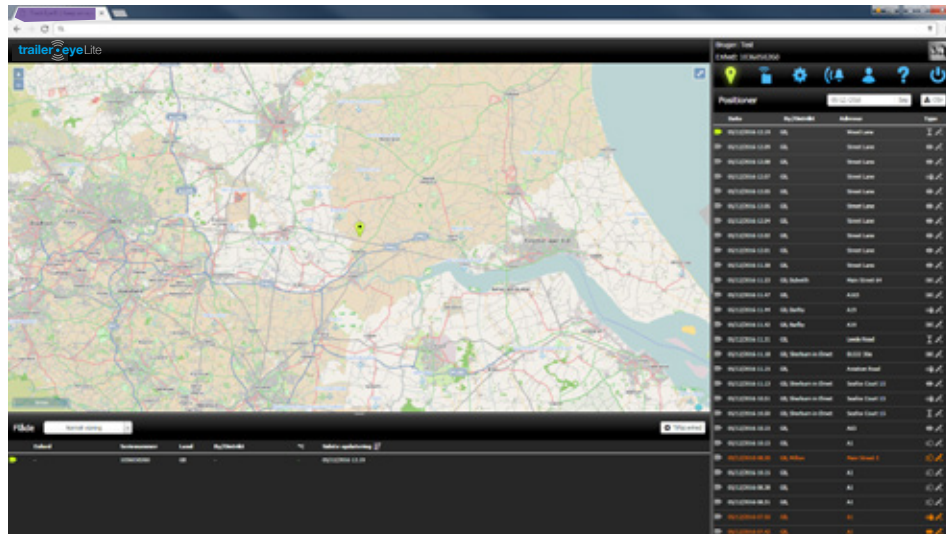
Note: Charging time by 10V is longer.

Guarantee 5 year, if:

- Subscription at Trailer-Eye
- The unit is not water damaged (wiring)
- No physical damage



Individual tracking on screen



Multiple gps positions on screen with full reporting

